

Bruce, Molly's Banana Toy

© July 2009

Judi's Dolls/Judi Ward

www.judisdolls.com www.thedollnet.com



Bruce is made from felt or velour. You need only a small amount of red, black and yellow. 1/4th yd is plenty of yellow and just one 9'X12' square of black and red. Thread to match....A bit of brown yarn for "hair".... a red 1/2" Pom Pom for the nose...Two, 1/4" to 1/2" black buttons with a shank on back for eyes....Red and black embroidery floss.... 8 12mm or 15mm chenille stems for leg and arm "stuffing".....Polyester stuffing....Sewing machine and ordinary sewing and stuffing supplies.

Retrace all parts to Freezer Paper and cut out. Iron body patterns to yellow fabric and cut out. Sew the body parts matching the notches as closely as possible....Leave open at the top of the head for stuffing....Turn RSO and stuff. Gather the top and pull tight to close and then tie in a little bunch of yarn for hair.

Assemble the yellow and red fabrics as shown on pattern and also assemble the yellow and black fabrics as shown.

Iron the leg and arm patterns to the assembled fabric as shown on pattern pages.... Try to keep the seams lined up. Sew around the templates, leaving open where shown on pattern pieces. Turn arms and legs RSO.

Stuff feet with stuffing and then bend 4 chenille stems in half. Wrap 2 for each leg with floral tape, and insert the bent ends into each leg. You can stuff around them if desired or leave them wiggly, but you will need to stuff the top 1/3 rd. of the legs.

Fold the other 4 chenille stems in half, and wrap 2 together with floral tape for each arm. (You may need to cut some of the ends off or bend them under too.)

Insert the bent end into the arm down to the wrist. Stuff around them if desired....Close the leg and arm openings with a ladder stitch.

Attach legs and arms to the body with a few stitches or by jointing the same as for Molly, but you just catch the fabric and a bit of stuffing rather than having buttons inside.

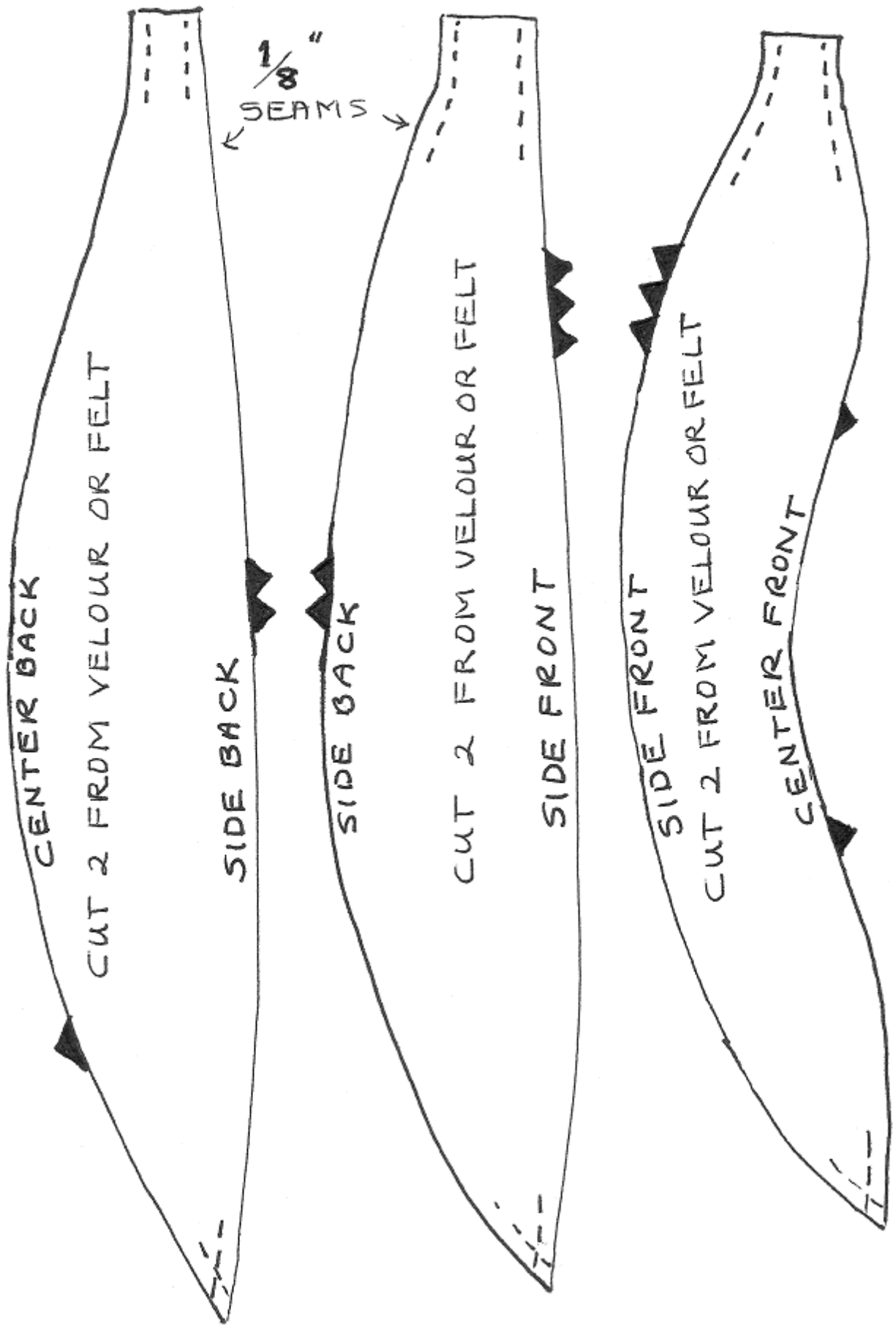
Glue or sew a Pom Pom on for a nose, sew the eye buttons on, or make simple embroidered eyes, and embroider the simple lines for the eyebrows and mouth.

I added Blanket stitching around the ankles and wrists too. "Google" Blanket Stitch if you need to see how to do it. It is amazing what one can Google!!!!

Bruce is wiggly and lanky and fun. He is not a toy with the buttons, chenille stems and Pom Poms though.

Molly loves him and they pose so sweetly together.

Dolly Hugs, Judi



CUT 2 FROM YELLOW
FELT OR VELOUR.

ARM & HAND FABRIC
ASSEMBLY

SEW FABRIC TOGETHER
LIKE FOR THE LEGS BUT
THE RED IS ONLY AT ONE
END.

STACK ASSEMBLIES RST
IRON ARM & HAND TEM-
PLATES IN PLACE AND
SEW AROUND THEM.

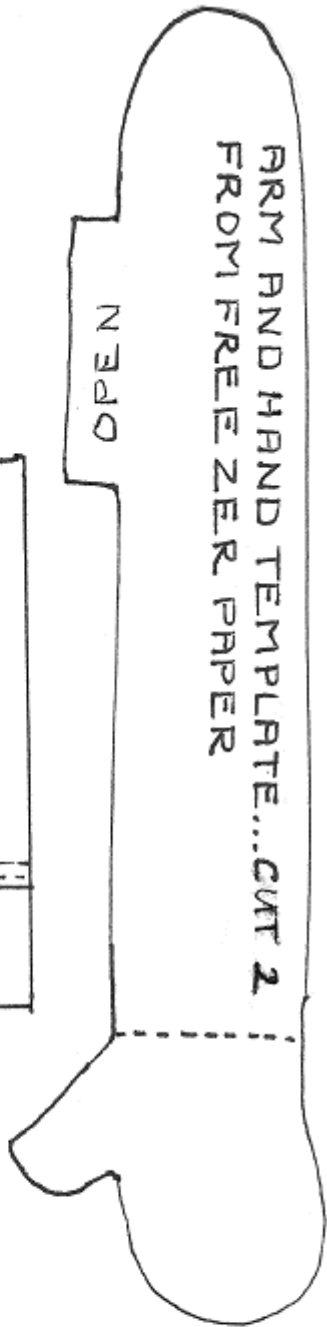
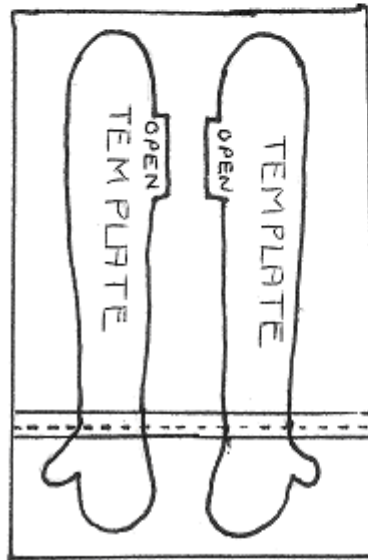
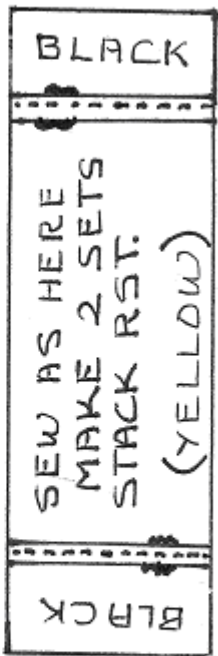
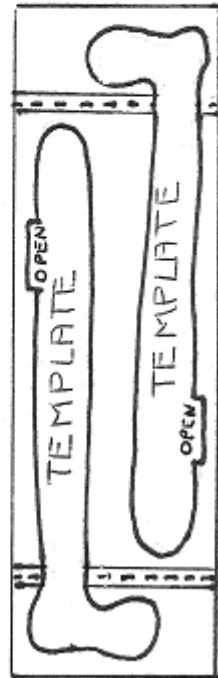
CUT 2 FROM RED FELT OR
VELOUR

LEG & SHOE TEMPLATE. CUT 2 FROM FREEZER
PAPER. IRON TO LEG & SHOE FABRIC ASSEMBLY. SEW
AROUND AND THEN CUT OUT.

OPEN

CUT 2 FROM YELLOW FELT OR VELOUR

LEGS & SHOES FABRIC ASSEMBLY
SEW PIECES AS SHOWN. STACK THE
TWO ASSEMBLIES RST... IRON LEG SHOE
TEMPLATE PATTERNS TO ASSEMBLY.



CUT 4 FROM BLACK
FELT OR VELOUR.
FOR SHOES. THIS
IS SEWN TO THE
ENDS OF THE 2
LONG YELLOW PARTS